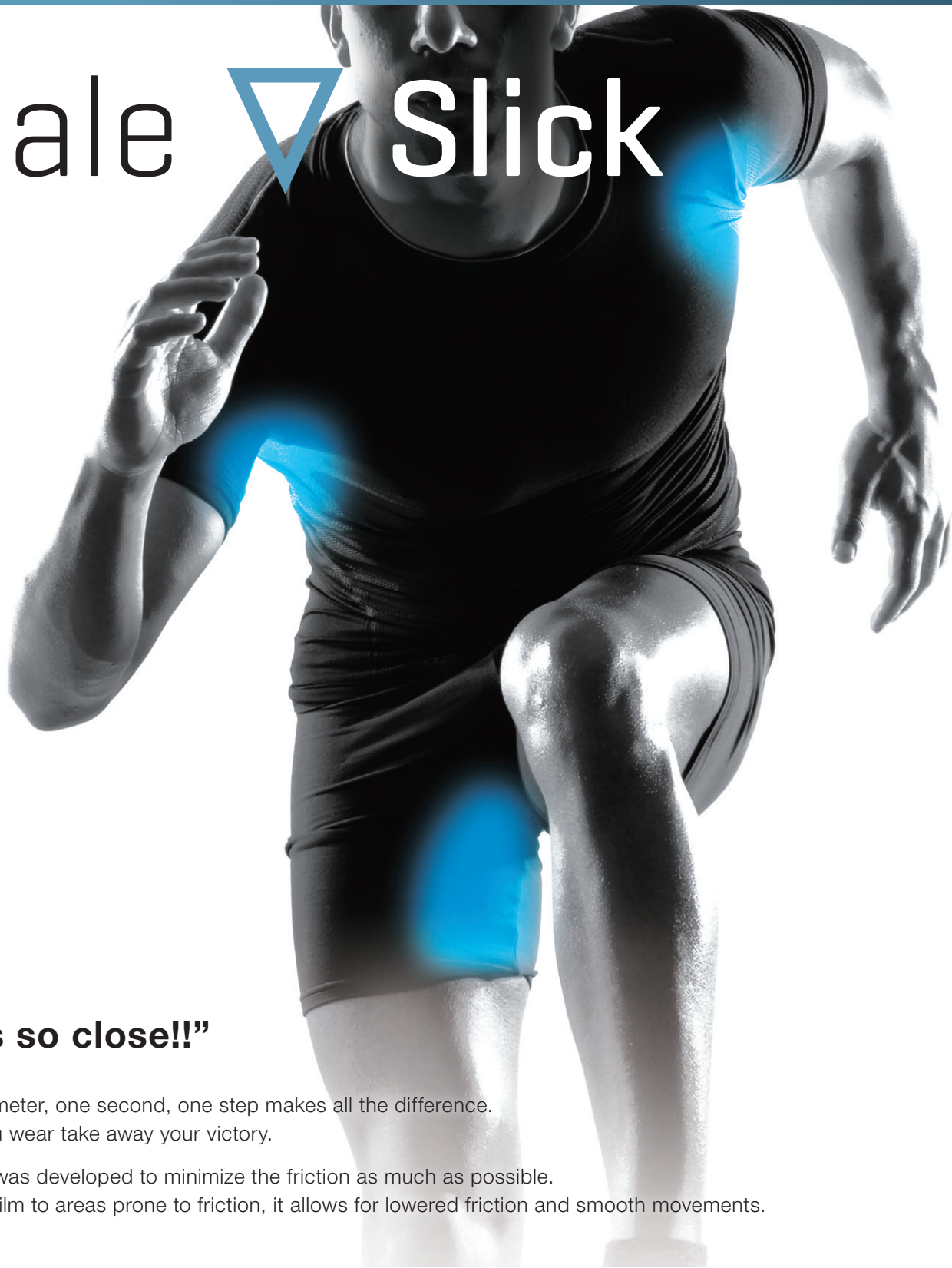


# Excale Slick



## “But I was so close!!”

Sometimes, one meter, one second, one step makes all the difference.  
Don't let what you wear take away your victory.

The Excale Slick was developed to minimize the friction as much as possible.  
By attaching the film to areas prone to friction, it allows for lowered friction and smooth movements.



Landing after a diving-receiving is made smoother with minimized friction between the court and the knee.



Every swing a sprinter makes becomes more fluid with lowered friction between the arms and the body.



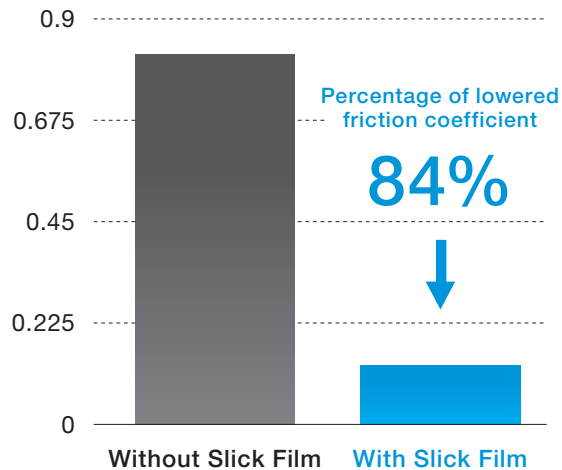
Paddling becomes smoother with lowered friction between the groin and the saddle.



Dodging tackles becomes easier with lowered friction on all area that may come in contact with the opponent.

## Test Data

### Friction coefficient of Slick Film



		Without Slick Film	With Slick Film	↓
Friction Coefficient	Dynamic	0.82	0.13	84% lowered
	Static	1.00	0.14	86% lowered

#### Dynamic Friction Coefficient

Dynamic friction is the friction between two surfaces that are in relative motion with respect to each other. Dynamic Friction Coefficient is the ratio of the force of friction that acts in a vertical direction on an object on a surface. The lower the number, the smoother it is.

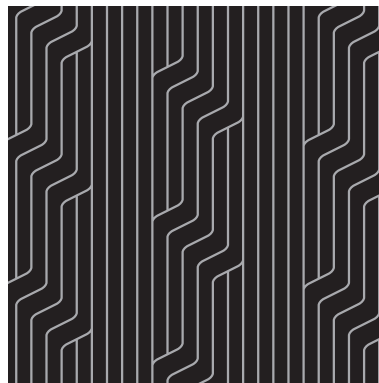
## Texture Sample

Full-Scale



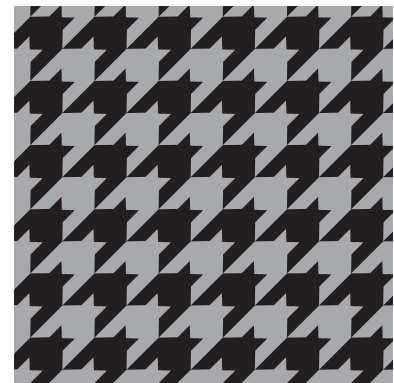
**EX-SL001-001**  
**ARROW**

Film Size: 320 (H) × 470 (W) mm



**EX-SL002-001**  
**TORRENT**

Film Size: 320 (H) × 470 (W) mm



**EX-SL003-001**  
**HOUND'S TOOTH**

Film Size: 320 (H) × 470 (W) mm



TRANSFER TO SUCCESS

**Japan Polymark Co., Ltd.**

45-300 Shimizusugitanicho, Fukui-shi, Fukui, 910-3607, Japan

Tel: +81-776-98-2233 Fax: +81-776-98-3888 Mail: yamamoto@polymark.co.jp

<http://www.polymark.co.jp/>